

TRIMBLE eCOGNITION

eCognition Architect - Fundamentals

Training Overview

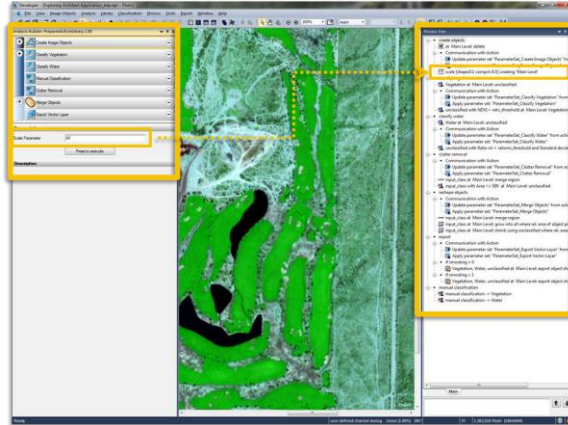
Version 9.1

Geospatial Division, 10368 Westmoor Drive, Westminster, CO 80021, USA

© 2015, Trimble Navigation Limited. All rights reserved. Trimble, the Globe & Triangle logo are trademarks of Trimble Navigation Limited, registered in the United States Patent and Trademark Office and in other countries. All other trademarks are the property of their respective owners.

Overview

This two day course explains how complex image analysis routines can be converted into production-oriented, semi-automated workflow “solutions” for eCognition Architect. Attendees will receive an introduction to creating solutions based on a simplified user interface via “widgets”, “parameters sets” and “variables”.



Content

eCognition Architect – Fundamentals covers the core functionalities and methods required for the development of Architect solutions. The course utilized both the Developer and Architect software packages and includes the following topics:

- Introduction to eCognition Architect
- Going from RuleSet to Solution
- Creating an “Action Library” & “Solution”
- Working with Parameter Sets & Variables
- Action groups, widgets & more
- Solution management

Format/Price

This two day instructor-led training is available as an open training or in-company training (max. 10 participants). The price is available upon request (eCognition_Training@trimble.com).

Prerequisites & recommendations

We recommend that participants have a solid understanding of remote sensing and GIS procedures and components; familiarity with image analysis is advantageous, but not required. Additionally, participants should be familiar with RuleSet development within eCognition Developer – it is recommended that they attend the eCognition Developer – Fundamentals class prior to this course. Each participant is responsible for bringing a laptop that meets the eCognition system requirements.